

Installing and uninstalling blaZt USB drivers Wi n98



Last revised - Apr-07

How to install the blaZt USB drivers for Windows 98

These instructions have been copied and adapted from the FTDI website which can be found at <http://www.ftdichip.com>.

If a device of the same type has been installed on your machine before and the drivers that are about to be installed are different from those installed already, the original drivers need to be uninstalled. Please refer to the [Uninstalling FT232BM, FT245BM, FT8U232AM and FT8U245AM](#) Devices section of this document for further details of this procedure.

1. Download the latest available VCP drivers from the [FTDI website](#) and unzip them to a location on your PC. A copy of these can be found on the blaZt CD in the USB Drivers directory.
2. Connect the blaZt cable to a spare USB port on your PC. This will launch the Windows Add New Hardware Wizard. Windows may display a message reading "Building driver database" at this point which may take a few minutes to pass. Click "Next" to proceed with the installation.



3. Select "Search for the best driver for your cable. (Recommended)." as shown below and then click "Next".



4. Check the box next to "Specify a location" and uncheck all others as shown below. Click "Browse" and locate the driver files. Once the files have been located, click "Next" to proceed with the installation.



5. Windows may display a message reading "Building driver database" at this point which may take a few minutes to pass. Once Windows has found the required files, click "Next" to install the device.



6. If the driver being installed does not have Microsoft WHQL signature files (.CAT files), the wizard will request a driver disk to attempt to find them. Click "OK" on the "Insert Disk" message box.



7. The following window will appear to assist in locating the file. To proceed with the installation without the .CAT file, click "Skip File".



8. If the driver being installed is Microsoft WHQL certified, then the .CAT files will be located with the other driver files and should be installed automatically.

9. Windows should then display a message indicating that the installation of the serial converter driver was successful. The COM port emulation driver must now be installed. Click "Finish" to complete the installation of the serial converter and proceed to the COM port emulation driver.



10. Under Windows 98, the COM port emulation driver will be automatically installed from the same location as the serial converter driver. However, if the driver is not WHQL certified as explained above for the serial converter driver, the wizard will ask for the location of .CAT files. Click "OK" on the "Insert Disk" message box.

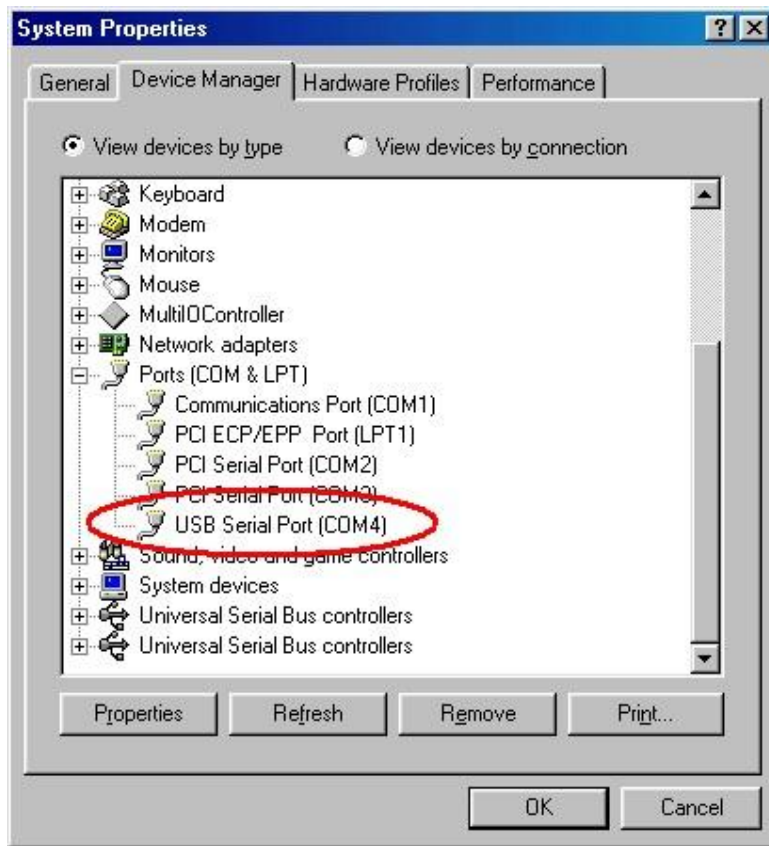


11. The following window will appear to assist in locating the file. To proceed with the installation without the .CAT file, click "Skip File".



12. If the driver being installed is Microsoft WHQL certified, then the .CAT files will be located with the other driver files and should be installed automatically.

13. Open the Device Manager (located in "Control Panel\System" then select the ""Device Manger" tab) and select "View devices by type". The device appears as an additional COM port with the label "USB Serial Port".



To set the cable to work with Datascan go to settings->communications in Datascan and set the 'COM Port' box to the COM number you found in the previous step.

To set the cable to work with conZult go to file->settings in conZult and set the 'COMPORT' drop down box to match the COM number you found in the previous step.